



## 2007 and up BMW X5 Stage 1 Speaker Upgrade Installation Guide

We know, the anticipation is killing you... “Just tell me how to install my new speakers already!”. Okay, okay. There are a few things we want you to consider before beginning the installation process, so if you decide to wing the entire installation and refuse to read the instructions, pay attention to this part and this part only:

- The Stage 1 speaker upgrade is not fully realized until ALL of the speakers have been installed. Installing one speaker, or both speakers in one door, and trying to “compare” to the factory system is NOT going to give you an idea of the full potential of the upgrade.
- Roll all of the windows down.
- Working on one door/area at a time, start on the passenger side front door, and work your way around to the center channel (if your X5 is equipped). This ensures no screws are misplaced, as well as prevents any accidental damage to a door panel you mistakenly left in front of the doggie door.
- Do NOT rush the installation. Coming home after an 8-12 hour day and trying to perform the installation in the dark in your garage while your 6 year old daughter holds the flashlight does not make things go as smoothly as they can. We handle an entire Stage 1 upgrade in your X5 in about an hour and a half at our shop, and you should be able to knock it out over the course of a Saturday afternoon. Patience, grasshopper!

We'll proceed as follows:

- Front Doors
- Rear Doors
- Rear D-Pillars (Top Hifi Only)
- Center Channel (Hifi and Top Hifi Only)

### Front Doors:

1. Believe it or not, the front doors are very simple to remove. I like to start by identifying the easy-to-locate screws, along the bottom of the panel. There are two of them, both of which are Torx T20. Remove these.



2. Now is also a good time to pop out the light on the underside of the panel as well. Using your plastic panel removal tool, carefully pry out the front edge (closest to the front of the car when the door is closed). The light will pop out, and you can unplug it. Place this aside in the area where you will also be keeping the screws.
3. Moving upwards, we remove the black plastic trim behind the door handle using our plastic panel removal tool. Start at the top, and it'll pop right out. This will reveal another Torx T20. Remove this.

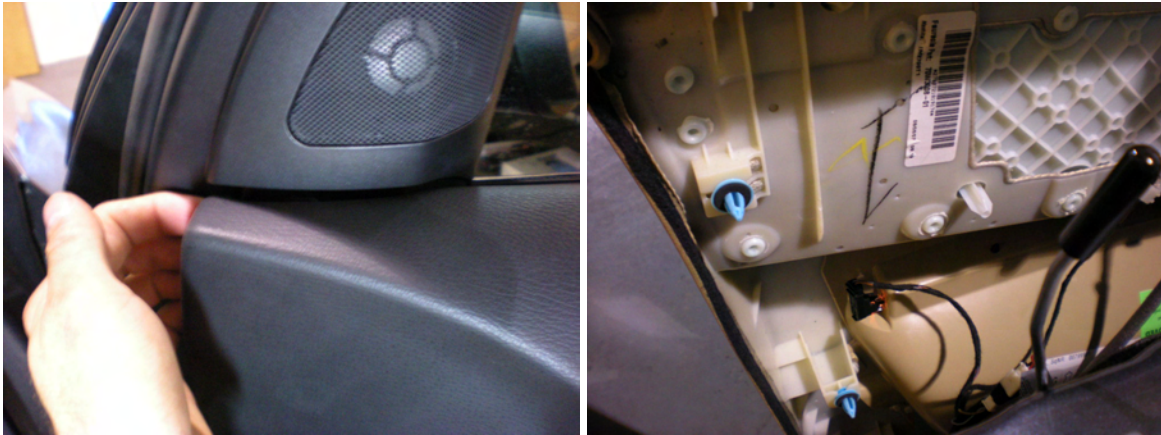


4. Again, using your plastic panel removal tool, carefully pry along the bottom edge of the door pull, as we're going to separate the front of the pull from the rear. Once the initial separation begins, use your hand to remove the rest of the panel. Be firm but gentle in your pulling. Once the panel is removed, two more Torx T20 bolts will be revealed. Remove these, and the panel is ready to be separated from the door itself. See, we told you it was easy!



5. We now want to begin removing the panel itself. I like to start with the front top edge, just below the tweeter mount. Admittedly I have smaller hands, so if you're bigger than I am, and you most likely are, you may want to use your plastic panel removal tool to get the process started. Simply place your hand or tool behind the edge of the door panel and carefully pry outward. You'll hear a pop, which is the first clip freeing itself from the door.

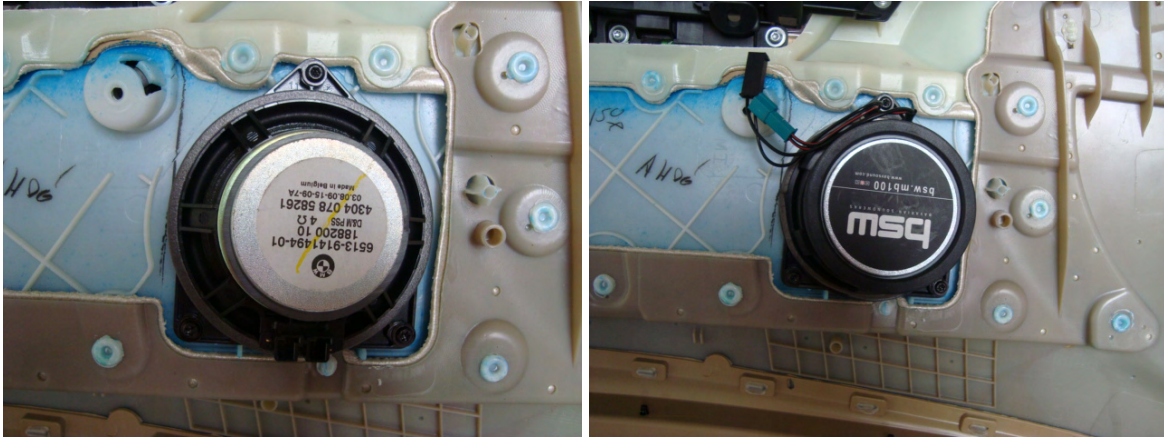
6. The picture on the right shows you the blue “clips” that you’ll be removing. Once that top corner is removed, begin working your way around the panel until it is completely free. Take a firm grip while pulling in towards the car. The top edge is going to require a small amount of finesse, which you’ll see as you get there. Don’t force anything. It will come off, we promise.



7. With the panel freed, the first thing we’ll do is unplug the speakers, window controls and lighting. Simply pull outward away from the speaker/switch, and the connectors will free themselves. Now, we need to pop out the door latch mechanism. It’s easy, don’t worry! Just place your fingers behind the switch as shown, and pull away from the panel:



8. With the panel free, take it to your workspace and prepare for the midrange installation. The midrange is attached using three Torx T20 screws. Remove these, and install your new BSW midrange. Simple! Photos on next page.



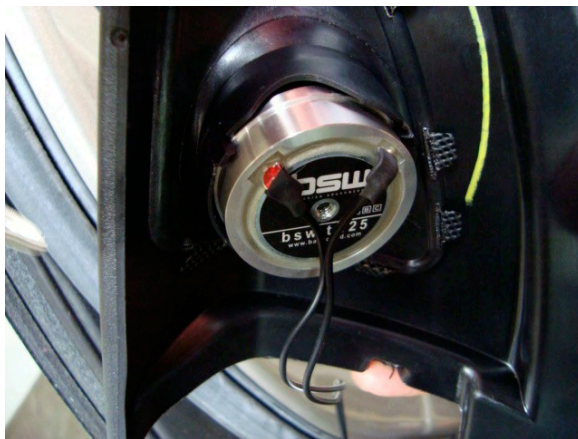
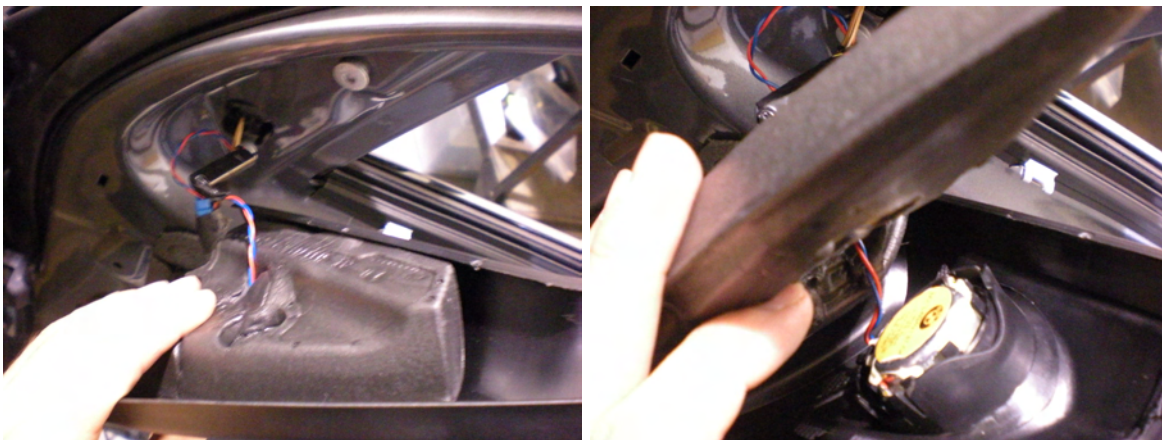
9. Now is the time to install your sound deadening if you chose to add it to your package. See our supplement on [www.youtube.com](http://www.youtube.com).
10. With the midranges installed, now we can install the front tweeters. You'll be amazed at just how simple this process is to handle. Using your hand or plastic panel removal tool, pry on the bottom edge of the tweeter sail as shown.



11. With the front edge loose, push toward the rear of the door, freeing the rear lip of the tweeter panel. Now, you can start peeling back the upper section of the tweeter sail so that you can move the pod enough to swap out the tweeters.  
Photos on next page.



12. Pry off the foam, and with the factory tweeter exposed, remove it using your angle pick tool. Carefully pry out at the attachment points, and the tweeter will free itself. Snap the new BSW tweeter into place, reinstall the foam, and voila!



13. Now, snap the upper edges of the tweeter sail back onto the door, and carefully note how the rear edge of the tweeter pod needs to hook into the groove before you attempt to snap the pod into place. The BSW tweeter wire will plug into the connector attached to the midrange speaker when you're reattaching the door panel. Don't worry about the factory tweeter plug.



14. With the pod snapped back into place, you're now ready to reinstall the door panel. Don't forget to plug ALL of your connections back into place, as well as your door handle. We recommend starting the attachment process on the top edge of the door panel, and slowly working your around by ensuring the clips are aligned with the holes in the door before firmly pressing inward, securing the panel for good.

### **Rear Doors:**

The removal process for the rear doors is the same as the front doors. Therefore, please refer back for a refresher course, although we bet you can do it from memory now! Now, what about the midrange/tweeter installation process. Well, that does vary a bit, at least with regards to the tweeters (if your X5 is so equipped). Let's see how it's done.

1. With the panel removed, you'll notice the midrange mounts the same way as the front door. This will make things easy, as you already know how to handle things. The tweeter, while slightly different in appearance, still mounts the same way albeit with just a little bit of glue. So, pry the glue off and pop out the factory tweeter.



2. The new BSW tweeter will snap right into the housing, and for good measure, you may want to dab a couple of drops of glue to secure the tweeter. Not necessary, but some of us believe there's no such word as "overkill". Plug the tweeter into the midrange.
3. If you ordered sound deadening material, now is the time to install it. Please see our guide at [www.youtube.com](http://www.youtube.com).
4. Re-install the door panel. Voila!

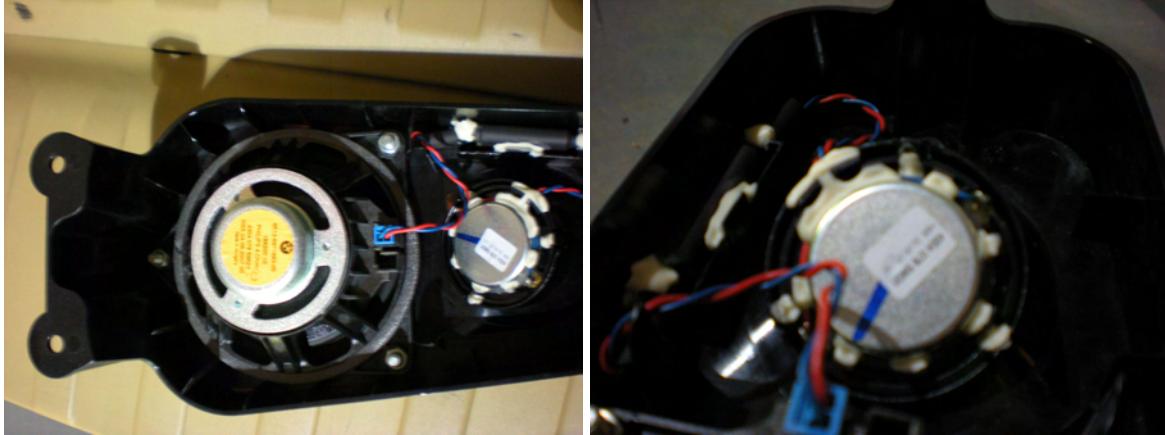
## Rear D-Pillars (Top Hifi Vehicles Only)

Again, this is a very simple process.

1. Using your panel removal tool, carefully pry out the rear D Pillar starting at the top edge. The photo on the right shows the three points of attachment ( 1 blue clip, 2 white clips). Use your hands to remove the panel.



2. With the panel removed, detach the midrange/tweeter pod by removing the three Philips head screws that attach it to the body. Take the pod to your workspace. Remove the three 8mm nuts that attach the factory midrange and pry the factory tweeter out of it's housing using your right angle pick. Attach the new BSW midrange to the panel, and snap the new BSW tweeter into the housing (just like the rear door panel). Plug the tweeter into the midrange. Revel in your success.

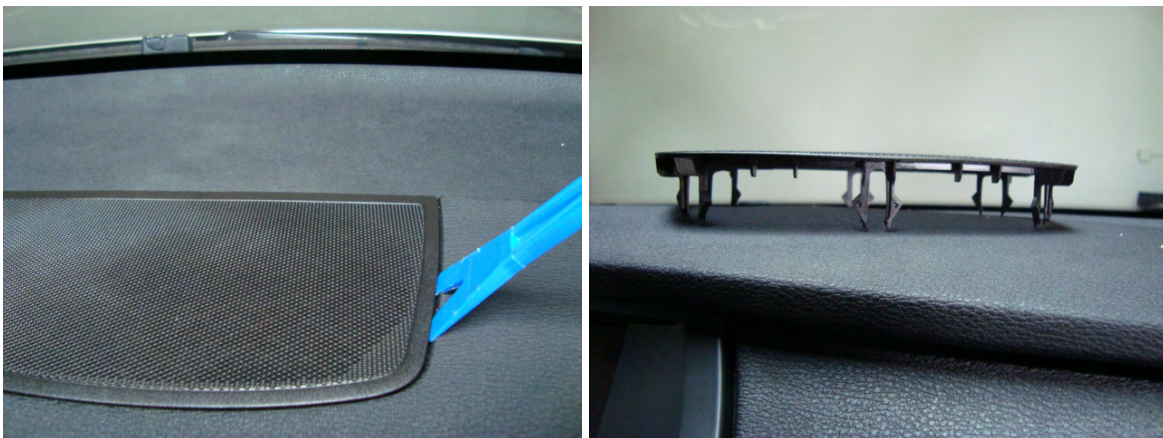


3. Take the housing back to the car, plug in the midrange, and screw the housing back down to the body. Reinstall the panel. Smile.

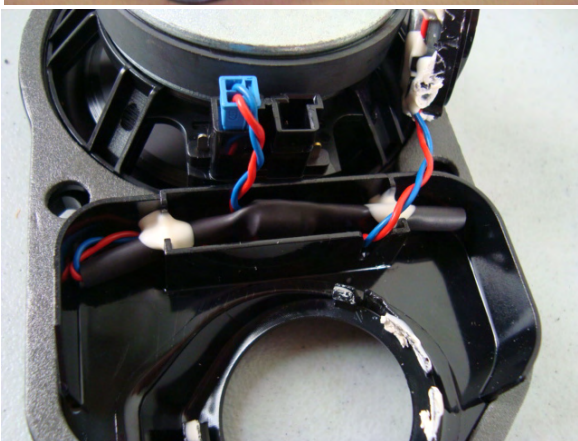
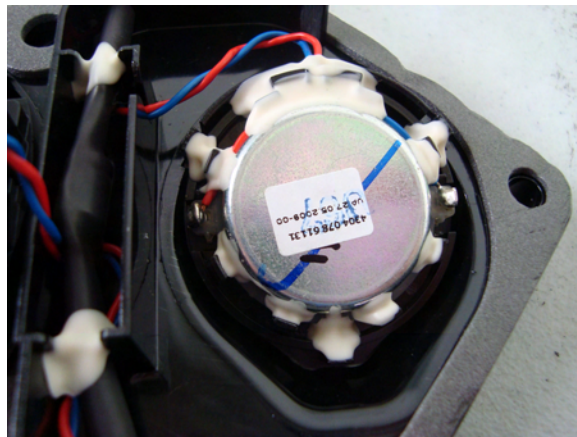
### Center Channel (HiFi and Top HiFi Vehicles Only)

This part is super easy, but you must be VERY careful when removing the grille that sits atop your center channel drivers. It is VERY thin, and can be broken very easily if you aren't SUPER careful. The good news is that now you know to be careful, so you won't break it. If you do break it, it's only ~\$12.

1. Using your plastic panel removal tool, CAREFULLY being prying between the grille and the dashboard, as shown below. The picture on the right shows the clips that you'll be "freeing" from the dashboard. Carefully work your way around the grille until it's loose, and finish the removal using your hands.



2. The midrange/tweeter housing is attached using 4 Torx T20 screws. Remove these, unplug the assembly, and take the pod to your workstation.
3. Pry out the tweeter using your right angle pick. Snap the new BSW tweeter into the housing, and drop the new BSW midrange into the midrange location. Plug the tweeter into the midrange.





4. Head back over to the X5, and plug the midrange into the factory connector. Reattach the housing, snap the grille back in, and pat yourself on the back.
5. Call everyone out to the garage for a celebration, as you just installed the best speaker system available for your X5!